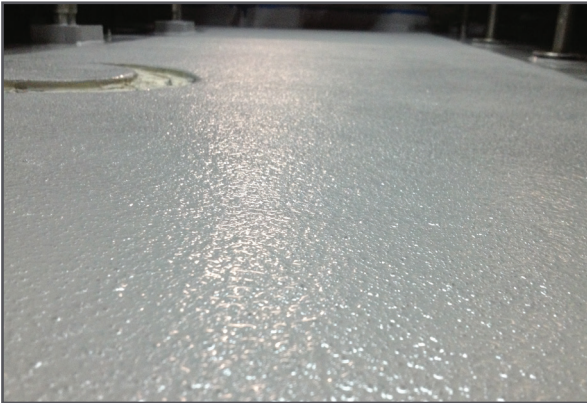


### Technical Data Sheet

## SR100 - Slip-resistant Flooring System



#### Product Description

A seamless epoxy flooring system impregnated with a specialty aggregate to create a long-lasting non-slip surface capable of withstanding the harshest traffic.

Premium epoxy resins and curing agents are used for a durable floor coating suited to industrial environments.

#### Uses

- Floors exposed to heavy traffic, chemicals and impact, in both wet and dry conditions.

#### Technical Information

Vehicle Type: 2-pack epoxy/polyamine.  
 Colour: Tintable.  
 Finish: Semi-gloss with aggressive texture.  
 Cleaner: MEK, acetone, methylated spirits.  
 Solids: 100%

#### Technical Advantages

- Non-hazmat - solventless, non-corrosive, non-flammable products for safer use and simplified, cheaper transport.
- Field-friendly - mix ratio tolerance and long storage life, combined with surface/moisture tolerance gives a truly field-friendly flooring system.
- HD Agg (Mohs hardness of 9) adds supreme wear, impact and abrasion resistance and offers a lasting non-slip profile.
- Good overall chemical resistance, including 70%

sulphuric acid.

- Can be applied onto dry, damp or even wet surfaces - completely moisture tolerant with no amine blushing.
- Good tolerance of low temperatures.
- Solventless system with no strong odours can be applied in confined spaces without need for ventilation equipment or disruption to nearby people.
- Tintable for greater colour choice.
- 100% solids - long shelf life (don't have to use all at once) and no shrinkage in the coating film.

#### Chemical Resistance to Spillage

(for fully cured films)

10% Acetic Acid	50% Sodium Hydroxide
Bleach	70% Sulphuric Acid
Ethanol	Xylene
Toluene	Hydrocarbons/Fuels/Oils
Skydrol	5% Lactic Acid
Deionized Water	

Note - Staining may occur when exposed to aggressive chemicals. Good housekeeping practices, including dilution and spillage clean up, will minimise chemical damage. For full immersion performance, contact supplier.

#### Test Results

<b>Adhesion</b> ASTM D451/ISO 4624	Concrete - substrate failure in dry and wet Steel - Wet >2800psi - Dry >2600psi (for basecoat on its own)
<b>Hardness</b> ASTM D-2280 JIS K 5600-5-4:1999	70-75 Shore D (for topcoat on its own)

#### Surface Preparation

Concrete - New concrete surfaces should be allowed to cure for a minimum of 28 days. Old, damaged and/or heavily contaminated concrete surfaces should be degreased with an appropriate detergent and patch repaired, if applicable, prior to surface preparation.

Diamond grind, shot-blast or water-blast (3000psi with rotary head) as required to obtain a clean, granular feel.

# Technical Data Sheet

Properly prepared surfaces should be structurally sound and free of contamination, laitance and any loose material. Ensure prepared surface is clean, dry and dust-free again if there's a delay between preparation and application.

Coated Surfaces - Can be over-coated providing they're in good condition and there are no adhesion issues. Perform a small adhesion test in an inconspicuous area if in doubt. Clean the coat first, rinse thoroughly and dry before sanding with 80-120 grit paper. Vacuum and then wipe with methylated spirits to remove all dust.

Metal - High-pressure water-blasting or abrasive blasting to class 2.4 (AS 1627.4) with a typical profile of 50-70 microns in a jagged pattern. Grinding acceptable for small areas. Can be applied over tight rust.

## Mixing

For full safety instructions, consult SDS. Wear protective clothing, goggles and gloves to prevent skin and eye contact.

Mixing of the Jaxxon 1525 basecoat and Jaxxon 1505 topcoat should proceed as per data sheet instructions.

## Application

Pour the mixed Jaxxon 1525 basecoat directly onto the floor in an "S" shaped pattern and spread using a squeegee to before backrolling smooth.

Broadcast HD Agg immediately after the basecoat has been applied. Saturate the film using a "chicken feeding" technique until it has a completely dry look.

Allow to cure overnight or until floor is hard enough to walk on.

Sweep off excess aggregate. Pour the mixed Jaxxon 1505 topcoat into a roller tray and apply as evenly as possible using lint-free roller, making sure to fill all gaps between the aggregate. Backroll smooth.

Allow to cure overnight once more before returning to light service. Floor will achieve maximum properties after 7 days.

## Coverage

The actual coverage achieved by SR100 will depend on the substrate characteristics and condition. The theoretical yields for the SR100 components are:

Jaxxon 1505 6.5L kit @ 3.33-4m<sup>2</sup>/L = 21-26m<sup>2</sup>

Jaxxon 1525 6.5L kit @ 2.5-3.33m<sup>2</sup>/L = 16-21m<sup>2</sup>

Jaxxon HD Agg 20kg @ 1.5kg/m<sup>2</sup> = 13m<sup>2</sup>

## Cure Schedule

	Time (@ 25°C)
Pot Life	- 25 minutes
Set (touch)	- 6 hours
Set (hard)	- 15 hours
Re-coat (min.)	- 15 hours
Re-coat (max.)	- 36 hours
Full Cure	- 7 days

Approximate time frames for full kit of basecoat and topcoat. Pot life will shorten for larger mixes. Times will decrease as the temperature increases.

## Product Characteristics

- If more than one kit of Jaxxon 1525 or 1505 is mixed at a time, the product can reach high temperatures and experience a significantly reduced pot life.
- Non-slip profile can be adjusted/reduced through the application of additional Jaxxon 1505 topcoats.
- Should not be applied in temperatures lower than 5°C.
- Consistent with all epoxies, SR100 will tend to discolour upon extended UV exposure. This doesn't detract from coating performance.
- Non-flammable and doesn't pose a fire risk.

## Storage & Disposal

Keep containers closed when not in use. Store below 50°C. Do not store in direct sunlight. Shelf life is at least 12 months in original, unopened container. Seek advice from your local council regarding accepted disposal methods.

## First Aid

### CAUTION: KEEP OUT OF REACH OF CHILDREN.

IF ON SKIN: Remove immediately all contaminated clothing. Rinse skin with water. IF IN EYES: Rinse cautiously with water for several minutes. Immediately call a POISON CENTRE (Australia - 13 11 26) or doctor/physician. If skin irritation occurs: Get medical advice/attention.



Ph: 1300 66 33 17 [www.RealWorldEpoxies.com](http://www.RealWorldEpoxies.com)

WARRANTY DISCLAIMER: The technical data given herein has been compiled for your help and guidance and is based upon our experience and knowledge. However as we have no control over the use to which this information is put, no warranty express or implied is intended or given. We assume no responsibility whatsoever for coverage, performance or damages, including injuries resulting from use of this information or of products recommended herein. Date of Issue - May 16.